



Cush Wind Farm

Environmental Impact Assessment Report

Annex 5.5: Annex I Survey Data

Cush Wind Limited

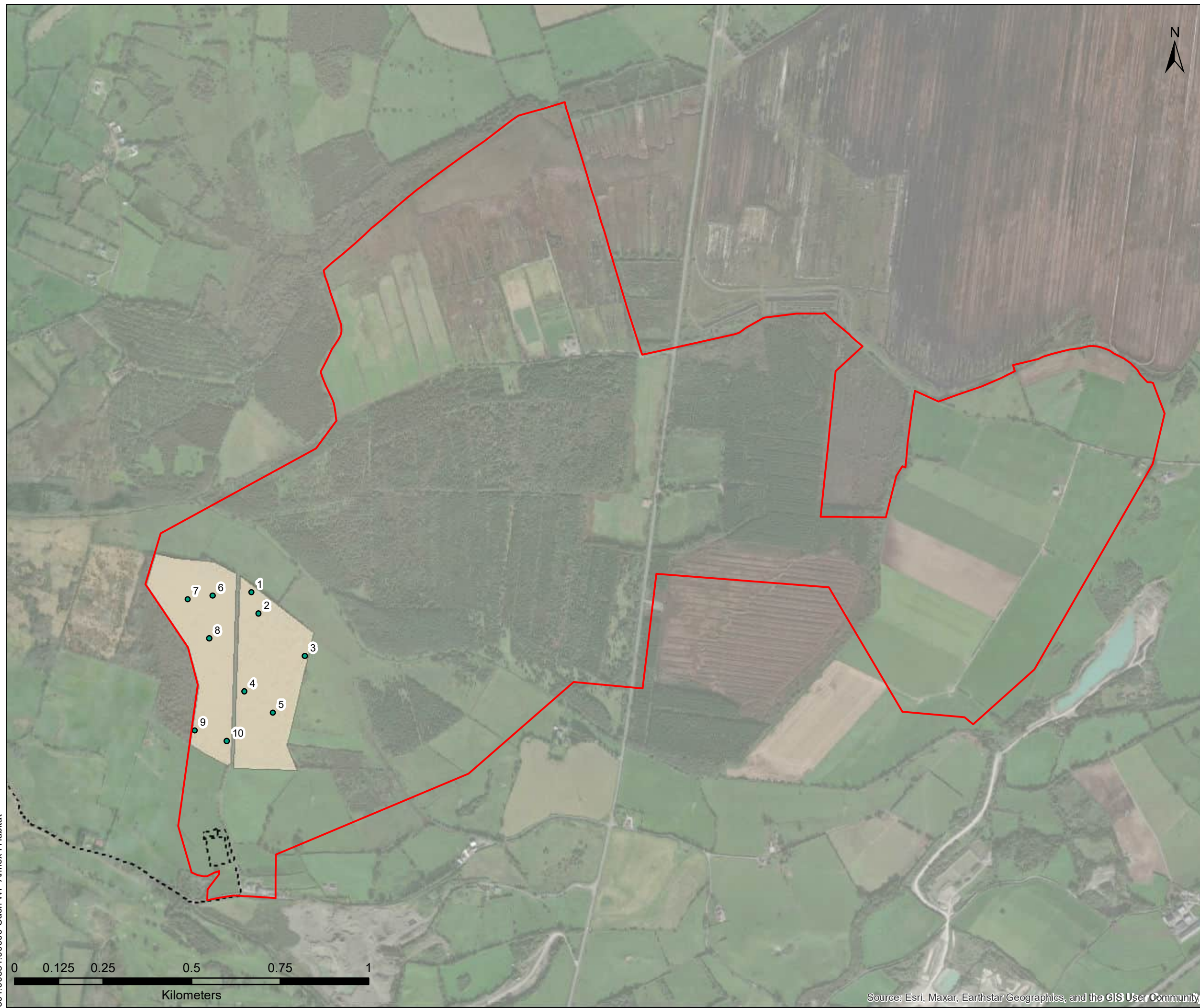
Galetech Energy Services
Clondargan, Stradone, Co. Cavan Ireland
Telephone +353 49 555 5050
www.galetechenergy.com



		Relevé No.									
		1	2	3	4	5	6	7	8	9	10
Species in Annex I Habitat Description ¹	<i>Agrostis canina</i>	-	-	-	-	-	-	-	-	-	-
	<i>Betula pubescens</i>	D	D	D	D	D	D	D	D	D	D
	<i>Carex canescens</i>	-	-	-	-	-	-	-	-	-	-
	<i>Carex echinata</i>	-	-	-	-	-	-	-	-	-	-
	<i>Carex nigra</i>	-	-	-	-	-	-	-	-	-	-
	<i>Carex rostrata</i>	-	-	-	-	-	-	-	-	-	-
	<i>Eriophorum vaginatum</i>	-	-	-	-	-	-	-	-	-	-
	<i>Frangula alnus</i>	-	-	-	-	-	-	-	-	-	-
	<i>Juncus acutiflorus</i>	-	-	-	-	-	-	-	-	-	-
	<i>Molinia caerulea</i>	A	A	A	A	A	A	A	A	A	A
	<i>Picea abies</i>	-	-	-	-	-	-	-	-	-	-
	<i>Pinus sylvestris</i>	O	O	O	-	R	R	-	-	-	-
	<i>Sphagnum sp.</i>	-	-	-	-	-	-	-	-	-	-
	<i>Vaccinium oxycoccos</i>	-	-	-	-	-	-	-	-	-	-
	<i>Vaccinium myrtillus</i>	-	-	-	-	-	-	R	R	R	R
<i>Viola palustris</i>	-	-	-	-	-	-	-	-	-	-	
<i>Hylocomium umbratum</i> moss	-	-	-	-	-	-	-	-	-	-	
Other Species Recorded	Other Trees Recorded	<i>Sorbus aucuparia</i> (F)	<i>S. aucuparia</i> (F)	<i>P. setiferum</i> (F)	<i>S. aucuparia</i> (A)	<i>S. aucuparia</i> (O)	<i>P. setiferum</i> (F)	<i>Corylus avellana</i> (A)	<i>P. setiferum</i> (F)	<i>C. avellana</i> (O)	<i>P. setiferum</i> (F)
	Other	<i>Polystichum setiferum</i> (F)	<i>P. setiferum</i> (F)	<i>R. fruticosus</i> agg. (F)	<i>P. setiferum</i> (F)	<i>P. setiferum</i> (F)	<i>R. fruticosus</i> agg. (F)	<i>P. setiferum</i> (F)	<i>R. fruticosus</i> agg. (A)	<i>P. setiferum</i> (F)	<i>R. fruticosus</i> agg. (F)
		<i>Rubus fruticosus</i> agg. (F)	<i>R. fruticosus</i> agg. (F)	<i>Carex sylvatica</i> (A)	<i>R. fruticosus</i> agg. (F)	<i>R. fruticosus</i> agg. (F)	<i>C. sylvatica</i> (A)	<i>R. fruticosus</i> agg. (A)	<i>C. sylvatica</i> (A)	<i>R. fruticosus</i> agg. (A)	<i>C. sylvatica</i> (A)
		<i>Osmunda regalis</i> (R)	<i>O. regalis</i> (R)		<i>C. sylvatica</i> (A)	<i>C. sylvatica</i> (A)	<i>R. loreus</i>	<i>C. sylvatica</i> (A)	<i>O. regalis</i> (O)	<i>C. sylvatica</i> (A)	<i>U. europaeus</i> (O)
		<i>Rhytidiadelphus loreus</i>	<i>Polytrichum commune</i>		<i>R. loreus</i>			<i>Ulex europaeus</i> (O)	<i>R. loreus</i>	<i>O. regalis</i> (O)	<i>R. loreus</i>
								<i>O. regalis</i> (O)			
						<i>R. loreus</i>					

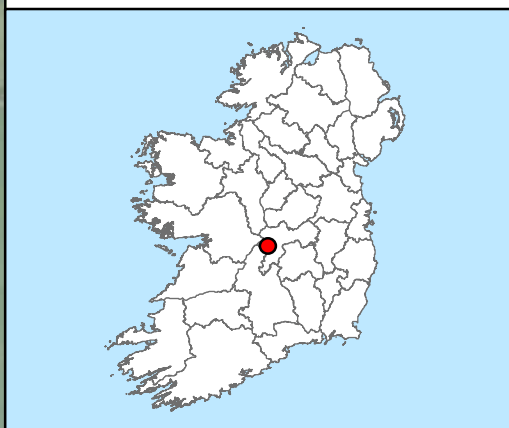
D = Dominant A= Abundant F = Frequent O = Occasional R = Rare - = Not present

1 - <https://eunis.eea.europa.eu/habitats/10197>



LEGEND

- Proposed Site Boundary
- Proposed Grid Connection
- Bog Woodland WN7
- Relevé Locations



SLR

7 DUNDRUM BUSINESS PARK
WINDY ARBOUR
DUBLIN
IRELAND

T: +353 (0)1 296 4667
www.slrconsulting.com

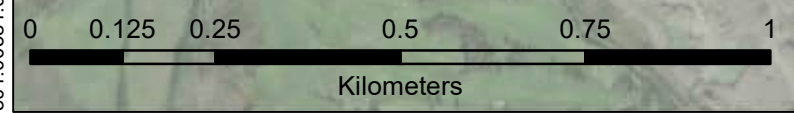
CUSH WIND FARM
BIODIVERSITY

ANNEX I HABITAT SURVEY

FIGURE 5.5.1

Scale: 1:10,214 @ A3 Date: NOVEMBER 2023

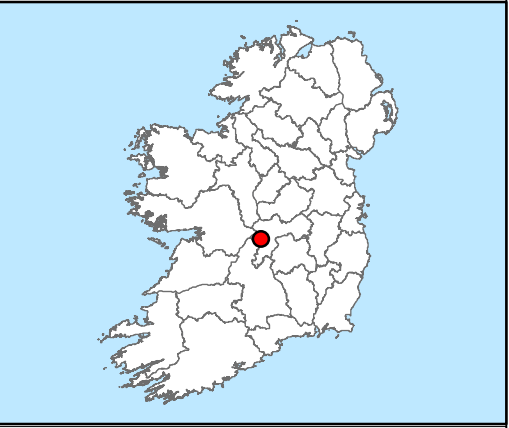
501.00581.00006 Cush WF Annex I Habitat



Source: Esri, Maxar, Earthstar Geographics, and the GIS User Community



- LEGEND**
- Proposed Site Boundary
 - Bog Woodland WN7
 - Relevé Locations



SLR

7 DUNDRUM BUSINESS PARK
WINDY ARBOUR
DUBLIN
IRELAND

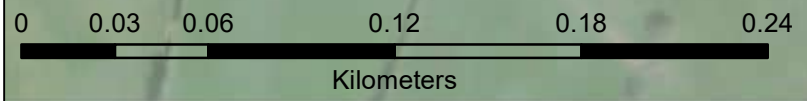
T: +353 (0)1 296 4667
www.slrconsulting.com

CUSH WIND FARM
BIODIVERSITY

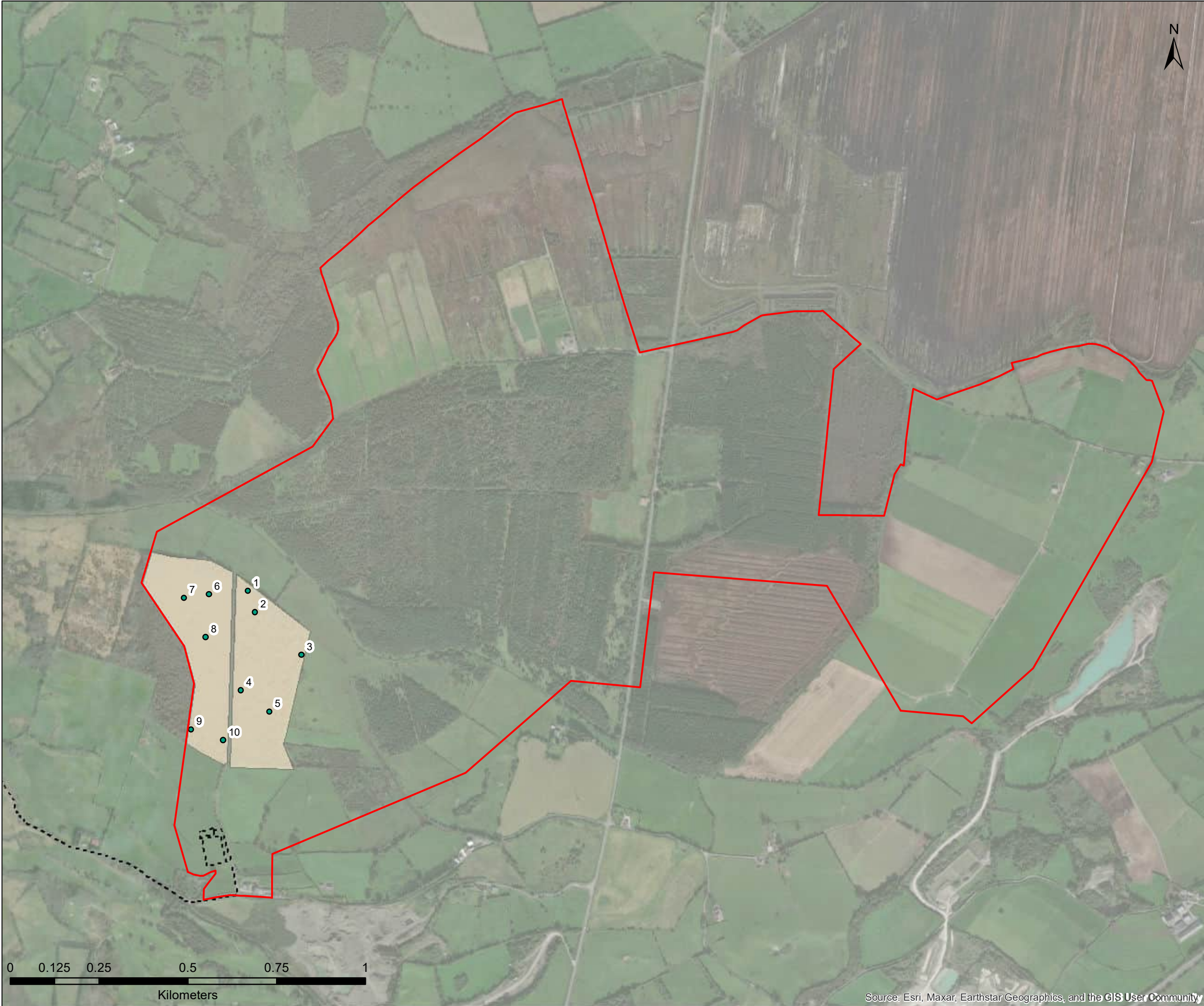
ANNEX I HABITAT SURVEY

FIGURE 5.5.2

Scale: 1:2,430 @ A3 Date: NOVEMBER 2023

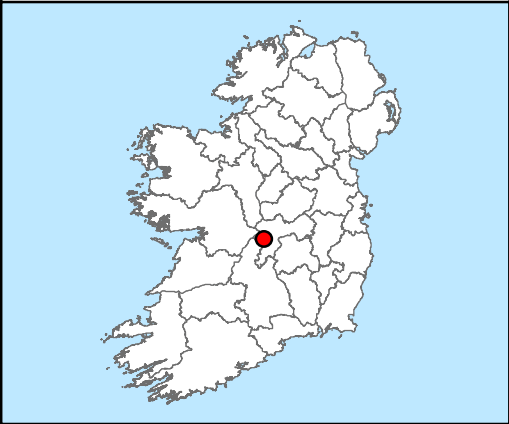


Source: Esri, Maxar, Earthstar Geographics, and the GIS User Community



LEGEND

- Proposed Site Boundary
- Proposed Grid Connection
- Bog Woodland WN7
- Relevé Locations



SLR
 7 DUNDRUM BUSINESS PARK
 WINDY ARBOUR
 DUBLIN
 IRELAND
 T: +353 (0)1 296 4667
 www.slrconsulting.com

CUSH WIND FARM

BIODIVERSITY

ANNEX I HABITAT SURVEY

FIGURE 5.5.3

Scale
 1:10,214 @ A3

Date
 NOVEMBER 2023

501.00581.00006 Cush WF Annex I Habitat

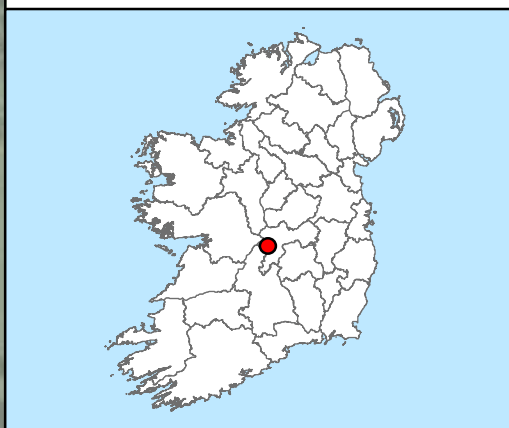
Source: Esri, Maxar, Earthstar Geographics, and the GIS User Community

501.00581.00006 Cush WF Annex I Habitat



LEGEND

- Proposed Site Boundary
- Proposed Grid Connection
- Bog Woodland WN7
- Relevé Locations



SLR

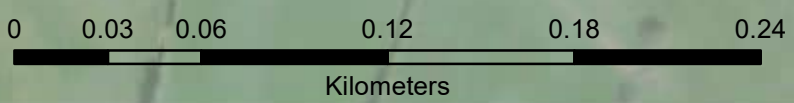
7 DUNDRUM BUSINESS PARK
WINDY ARBOUR
DUBLIN
IRELAND

T: +353 (0)1 296 4667
www.slrconsulting.com

CUSH WIND FARM
BIODIVERSITY

ANNEX I HABITAT SURVEY

FIGURE 5.5.4



Source: Esri, Maxar, Earthstar Geographics, and the GIS User Community

Scale 1:2,430 @ A3 Date NOVEMBER 2023